

PROVIDENCE PARK

THOUGHTFULLY CRAFTED FOR
COMFORTABLE LIVING



E-CUBE
CONSULTANCY



Ch. SAMBAJINAGAR

OUR STORY

In times when most homes are built for today, you could live in **Providence Park** - a home designed for your future.

Every wall, window, and material reflects thoughtful, nature-respecting design, creating a home that **adapts intelligently to its environment**.

Guided by **climate-adaptive principles**, Providence Park reduces heat gain, provides optimum daylight, and lowers energy use, ensuring maximum thermal comfort with natural ventilation and minimizing the reliance on air-conditioning.

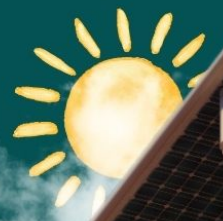
Here, **technology and tradition blend seamlessly**, creating a home that breathes with its environment while giving you comfort, health, and savings.

Providence Park is more than a place to stay — it's where your family can grow, belong, and thrive in a home created for the future.



WELCOME TO **PROVIDENCE PARK.**
A FUTURE-READY HOME.
NATURALLY.

KEY FEATURES



One Floor, One Flat

Enjoy unmatched privacy - like living in your own independent bungalow.



Spacious 3-BHK Residences

Thoughtfully planned layouts as per Vastu; for your family's comfort and modern lifestyle.



Climate-Adaptive, Net-Zero Energy Design*

Sustainable architecture for natural comfort and lower energy costs for you.



Solar Powered

Provision for Solar Panels for each apartment



Dedicated Water Tanks

Each flat has its own underground and overhead tanks - giving you independence and reliability.



Separate Tank for Flushing

Smart water management for sustainability and efficiency.



Rainwater Harvesting

Conserving natural resources for responsible living.



EV Charging for All Parking

Your parking is future-ready, with EV charging built in.



Windows that fully open

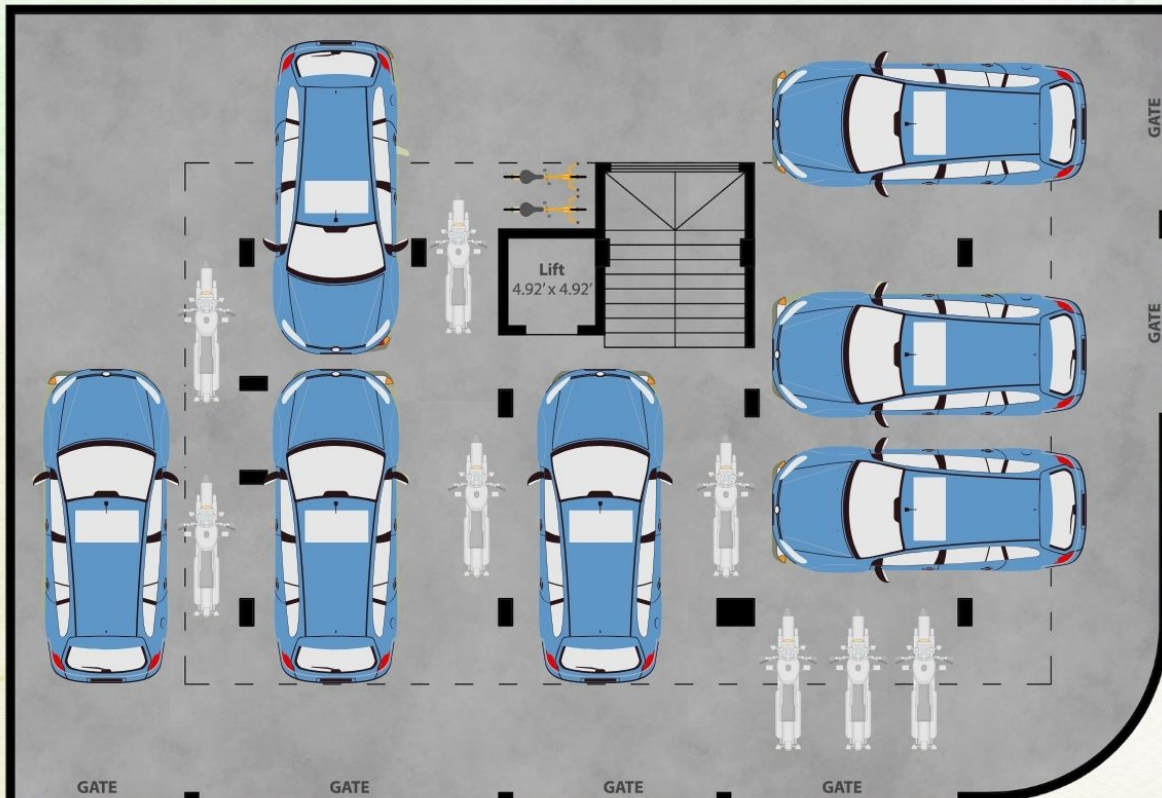
Every window is fully openable, ensuring better airflow, fresher interiors, and a healthier living environment.

*Net-Zero Energy Design: Subject to conditions of renewable energy generation and usage.

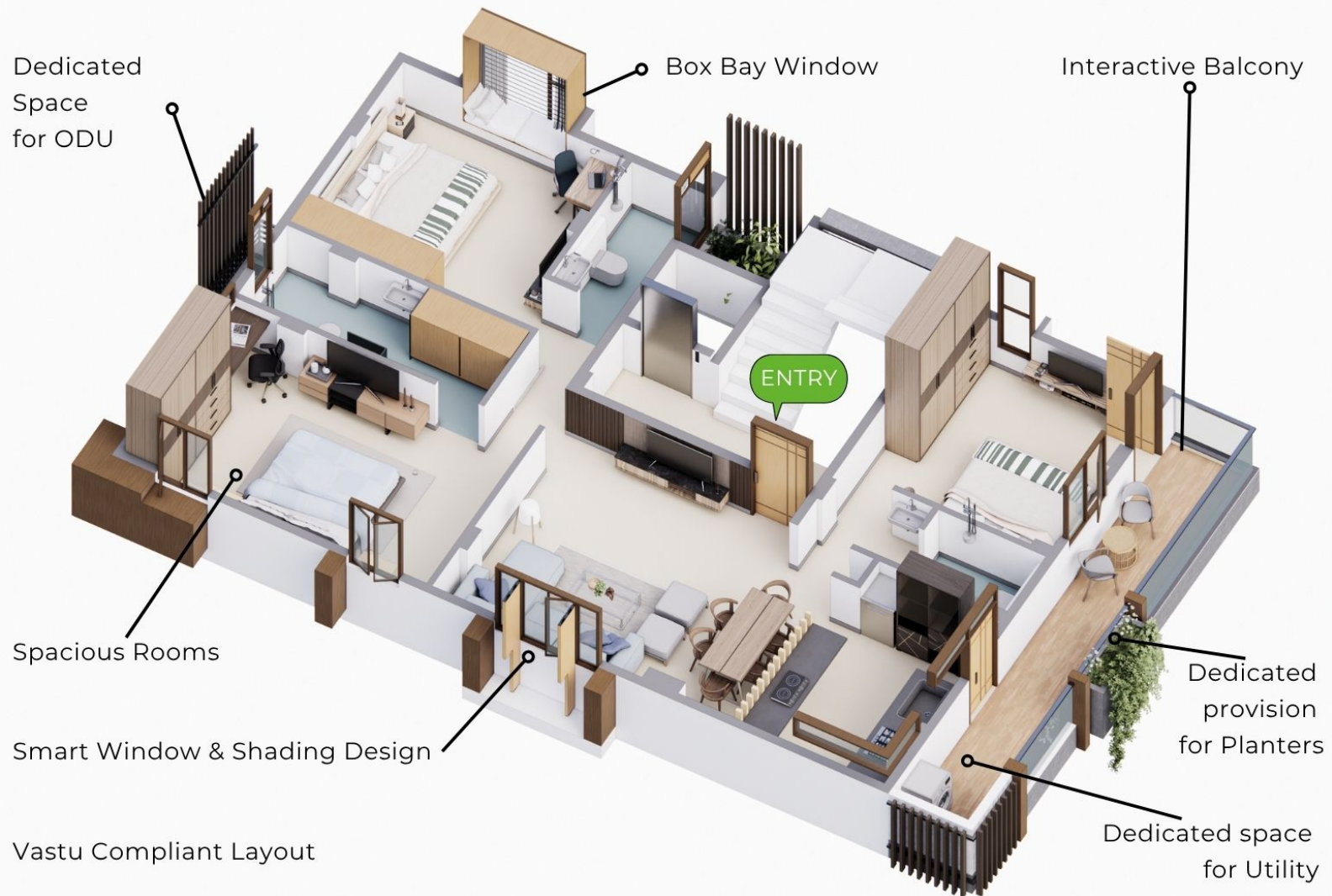
UNIT FLOOR PLAN



PARKING PLAN



APARTMENT 3D VIEW



PROJECT SPECIFICATIONS

Door

- Main Door *Frame* - Sagwan; *Door* - Plywood with laminate on both sides
- Bedroom Door *Frame* - Plywood; *Door* - Plywood with laminate on both sides
- Toilet Door *Frame* - Granite; *Door* - Plywood with laminate on both sides

Windows

- Granite frame
- Premium windows
- 100% openable windows

Electrification

- Ample electrical points
- Polycab or equivalent
- Goldmedal switches or equivalent

Tiles

- Floor: Vitrified (600x1200)
- Wall: Vitrified (300x600/600x600)
- Toilet: Vitrified Tiles

Plumbing

- Pipes: Prince/Supreme or equivalent
- Sanitary: Jaquar or equivalent
- CP fittings: Jaquar or equivalent

Construction Specifications

- RCC construction
- 6" Exterior Brick Wall
- Double Coat External Plaster; Single Coat Internal Plaster
- Internal Paint - 2 coat putty, 1 coat primer, 2 coat colour (lustre)
- External paint - one coat primer, 2 coat weather coat paint

Kitchen

- Granite top with kadappa stand

SUSTAINABILITY AT ITS CORE...

At **Providence Park**, your home is part of India's commitment to a sustainable, net-zero future. You don't just buy a flat - you become part of a larger shift toward responsible, **climate-conscious living**.

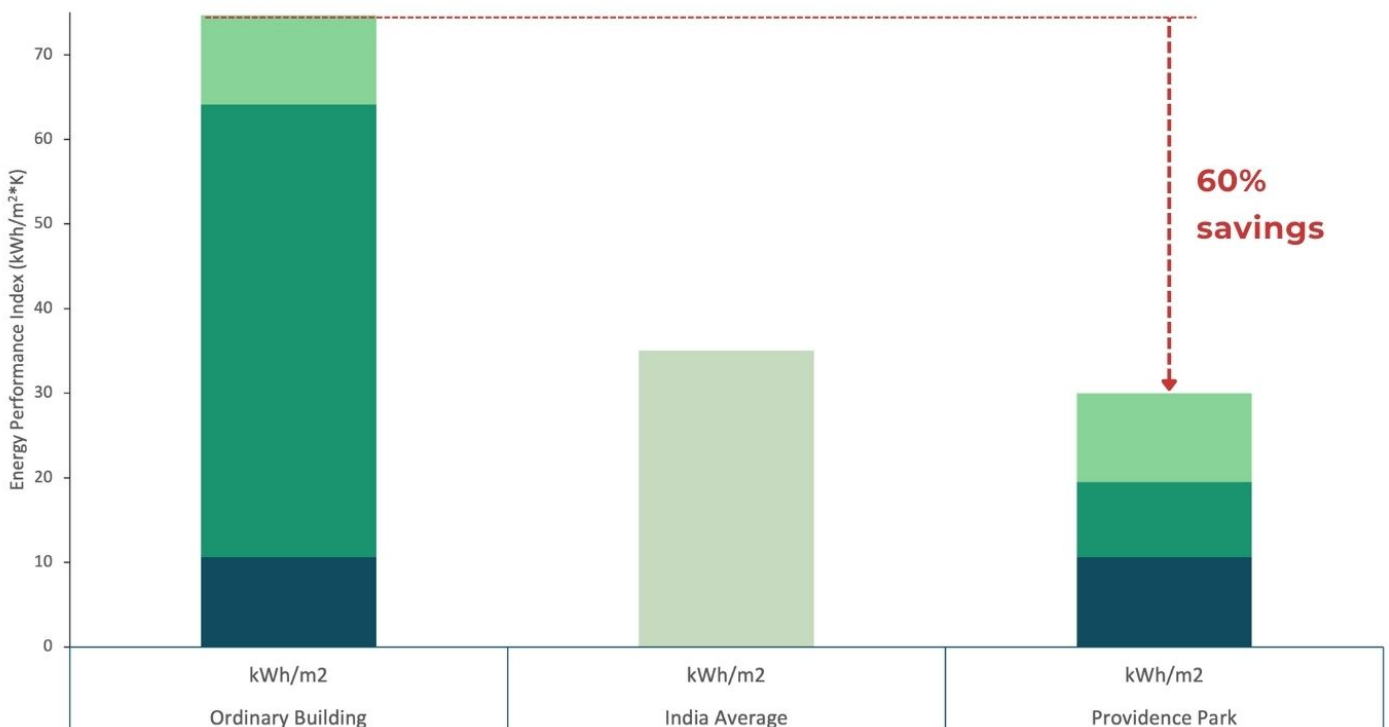
Every element is designed with care: walls and windows that **optimize daylight and ventilation**, materials that **reduce heat gain**, and **shading strategies** that keep your interiors **naturally comfortable** across seasons.

Providence Park stands as a testament to the belief that progress and sustainability can go hand in hand. With an impressive Energy Performance Index (EPI)¹ of just **30 kWh/m²·year***, the project sets a benchmark for energy-efficient living.

Your home isn't just stylish and comfortable. **Its deeply sustainable and a promise** — *a promise of a greener tomorrow, shaping a sustainable future for generations to come.*

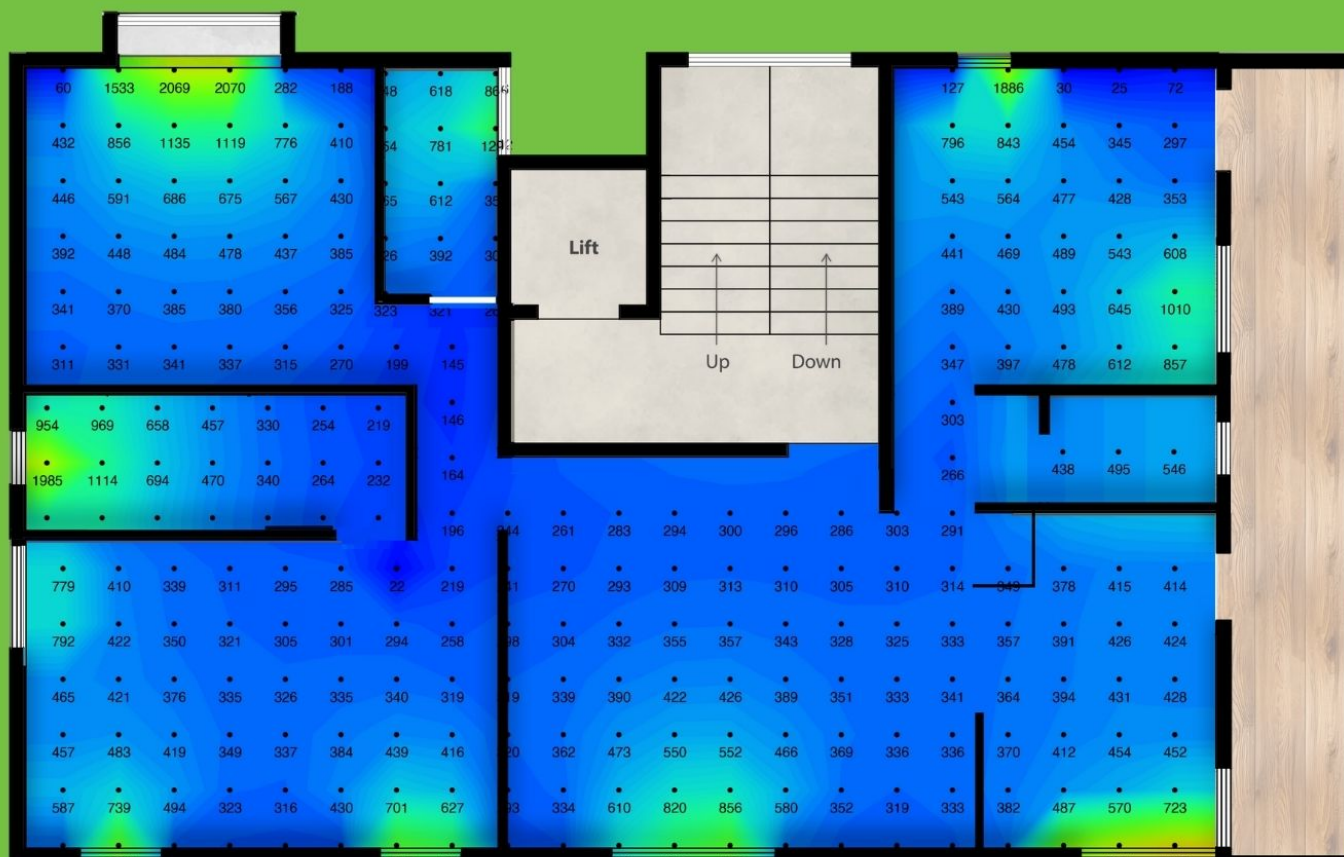
*Based on energy simulation study.

Comparison of Energy Consumption



¹ EPI: measures how much energy a building uses per square meter each year - just like a car's mileage, but for buildings. **Lower EPI = more energy-efficient building.**

SUSTAINABILITY AT ITS CORE...



Daylight levels inside the home | Bright and welcoming interiors, designed to let in ample daylight

Windows and shading devices at Providence Park are thoughtfully engineered for both comfort and efficiency. More than 75% of the year, windows remain shaded—minimizing heat gain, enhancing thermal comfort, and reducing energy use.

Their sizing and placement are carefully optimized: large enough to bring in ample natural daylight, yet not oversized to avoid overheating. The shading strategy blocks harsh summer sun while allowing warm winter light to enter—maintaining indoor comfort naturally across seasons.

This climate-responsive design meets international standards for daylight and energy efficiency, offering homes that are bright, comfortable, and sustainable—all year round.



BENEFITS

Zero Electricity Bills*

A home with lifetime savings on your energy bills.

Bungalow-Style Luxury

One-floor-one-flat and separate amenities like dedicated water tanks and parking. It's your own independent home.

Year-Round Comfort

Climate-adaptive architecture keeps interiors naturally cool in summer and warm in winter, ensuring comfort without excessive air-conditioning or heating.

Healthier, Brighter Spaces

Optimized daylight and natural ventilation provide bright, airy interiors for a healthier lifestyle.

Sustainable Living

Every element, from materials to building orientation, is designed to reduce environmental impact and support India's net-zero goals.

Future-Ready Investment

Homes like Providence Park are in demand, offering not just comfort but long-term value and peace of mind.

Life's Essentials Nearby

Schools, hospitals, shopping, and daily conveniences—everything you need for everyday living is comfortably close and easily accessible.

*Subject to conditions of renewable energy generation and usage.





- ① Living Room
- ② Bedroom 2
- ③ Bedroom 3
- ④ Master Bedroom

*All renders are for illustration purposes.



All renders are for illustration purposes.



